



LAKE SIDE
FLOOD SOLUTIONS

**LAKE SIDE STAINLESS STEEL
FIRE & FLOOD DOOR**



**PRODUCT DATA
SHEET**

The UK's First Fire & Flood Defence Door



LFS Stainless Steel Fire & Flood Defence Door

Robust, effective & passive flood defence solution.

Specification:

- Material: Stainless Steel S.S. 304
- Finish: Powder coating to any standard RAL colour
- Locking Mechanism: Internal Emergency Panic Bar; External Handle & Lock
- Hinge: Three-dimensional space heavy duty hinge
- Flood Rated Seals: Bespoke waterproof gaskets to door frame
- Fire Rated Seals: Rubber (NBR) Foam seals to door leaf
- Fire Rating: CNS112227 Certification "Fire Resistance Tests – Part 1: Door and shutter assemblies"
- Flood Rating: Independent Testing to 2m H; Testing pending to BS 851188

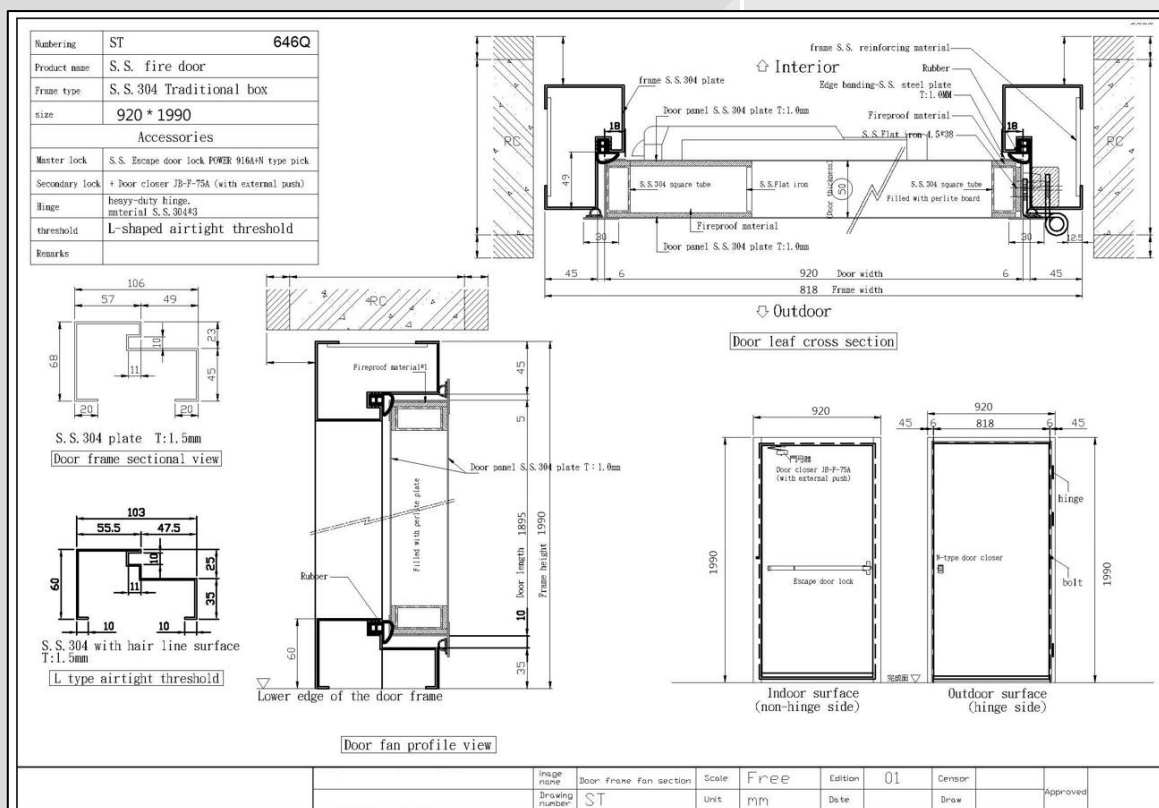
PRODUCT DATA SHEET

Key features:

- Robust protection against both fire & flood risk
- Unique seal mechanisms & hardware, resulting in flood protection to full door height
- As selected by Trafalgar Rowing Club, London



**GA Drawings provided prior to
Manufacture**



Locking Mechanism



INTERNAL PUSH BAR



EXTERNAL KEY & HANDLE IN WATERPROOF BOX

